

Hilton London Paddington

For the Stay



A Warm Welcome

A charming Victorian-style hotel that combines classic elegance with contemporary amenities. Conveniently located at Paddington Station, we provide easy access to London and beyond. Our facilities include Art Deco-inspired rooms, a restaurant, a bar, and a fitness centre. Your dedicated events team is here to help with all of your event needs and requests, including catering and AV equipment.

Our Facilities



Self Check-in



17 Flexible Meeting Rooms



423 Bedrooms



2 Ballrooms



Directly Linked to Paddington Station



On-site Gym

Our Location



BY TRAIN OR TUBE: The Great Western main line connects to western England and Wales. Tube lines include the Bakerloo, Circle, District, Hammersmith & City, and the Elizabeth line.



BY PLANE: Heathrow Airport is only a 15-minute journey via the Heathrow Express.



BY CAR: An APCOA car park is located an 8-minute walk from the hotel (charges apply).



LOCAL ATTRACTIONS BY FOOT:

Alexander Fleming Museum (3-mins) | Hyde Park (10-mins) | Little Venice (15-mins)

Hilton London Paddington

146 Praed Street, London, W2 1EE

<https://www.hilton.com/en/hotels/lonpdhi>



[+44] 0 207 850 0771



events.paddington@hilton.com



[@hiltonlondonpaddington](https://www.hilton.com/en/hotels/lonpdhi)

Hilton
LONDON PADDINGTON

Meetings & Events Facilities



Large Screens, Outlets & Modern Technology



Water, Flipchart, Pens & Snacks available to use



ESG Certified for a Sustainable Meeting Experience



Space for Tea/ Coffee Breaks & Hearty Lunches



Flexible Meeting Spaces including Accessible Rooms

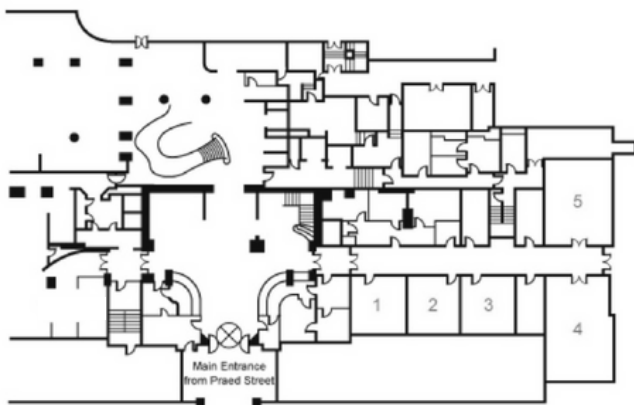
Capacity Chart

	M ²		Measurements (m)			Measurements (ft)			Capacity							
			L	W	H	L	W	H	Theatre	Classroom	Cabaret	Boardroom	U-shape	With stage / no stage	Dinner Dance	Reception
FIRST FLOOR																
Great Western 1	282.11	3036.61	25.37	11.12	4.87	83.34	36.48	15.97	350 / 300	160 / 120	150 / 120	70	60	280 / 290	240	300
Great Western 2	135.44	1457.86	12.18	11.12	4.87	40.03	36.48	15.97	140 / 120	70 / 50	64 / 50	40	40	100 / 120	80	120
Hobart	30.24	325.5	6.66	4.54	3.09	21.85	14.89	10.13	24	6	12	10	x	12	x	x
Campanula	40.57	436.69	7.54	5.38	3.09	24.74	17.65	10.13	32	22	24	18	20	20	x	20
Hurricane	22.17	238.64	4.82	4.6	2.68	15.81	15.09	8.79	27	6	8	10	x	12	x	x
Kingfisher	39.35	423.56	7.22	5.45	2.69	23.68	17.88	8.83	32	18	16	18	x	20	x	20
Redstar	56.27	605.68	9.15	6.15	3.1	30.02	20.17	10.17	48	22	24	25	22	30	x	30
Comet	24.75	266.4	5.5	4.5	2.67	18.04	14.76	8.76	24	6	8	10	x	12	x	x
Hotspur	11.74	126.36	3.58	3.28	2.67	11.74	10.76	8.75	18	6	8	8	x	8	x	x
King George	40.63	437.34	7.58	5.36	2.89	24.86	9.48	10.13	32	22	18	18	20	18	x	20
GROUND FLOOR																
Maclver	51.17	550.79	8.32	6.15	3.27	27.29	20.17	10.73	60	18	32	25	24	40	30	40
Thunderbolt	65.87	709.02	9.98	6.7	3.38	32.74	21.98	11.09	70	28 / 24*	40	28	25	50	30	50
Maine	23.64	254.45	5.03	4.7	3.38	16.5	15.42	11.09	18	6	8	10	x	12	x	x
Tangley	22.85	245.95	4.82	4.74	3.38	15.81	15.55	11.09	18	6	8	10	x	12	x	x
Talisman	24.38	262.43	5.08	4.8	3.38	16.66	15.74	11.09	18	6	8	10	x	12	x	x

*GW1 (Banquet) can hold up to 280 guests WITH a stage | GW2 (Banquet) can hold up to 100 guests WITH a stage

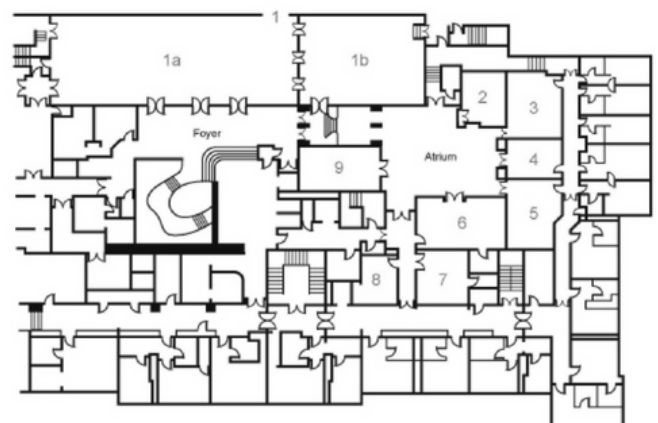
Floor Plans

GROUND FLOOR



- (1) Talisman
- (2) Tangley
- (3) Maine
- (4) Thunderbolt
- (5) Maclver

FIRST FLOOR



- (1a) Great Western
- (1b) Great Western 2
- (2) Hobart
- (3) Campanula
- (4) Hurricane
- (5) Kingfisher
- (6) Redstar
- (7) Comet
- (8) Hotspur
- (9) King George V

Hilton London Paddington

146 Praed Street, London, W2 1EE

<https://www.hilton.com/en/hotels/lonpdhi>



[+44] 0 207 850 0771



events.paddington@hilton.com



@hiltonlondonpaddington

